

Diameter in	Diameter mm	Bore mm	Kerf thickness mm	Body thickness mm	Number of teeth	Teeth shape	Cutting result	Reduction ring mm or inch	Part number	EAN Code
-------------	-------------	---------	-------------------	-------------------	-----------------	-------------	----------------	---------------------------	-------------	----------

**Product properties** | **Ordering information**

**Miter Saw and Table Saws** **MULTI MATERIAL**

8 1/2"	216	30	2.00	1.50	80	HLTCG	••••	25	2608642196	3165140602037
10"	254	30	2.70	2.00	100	HLTCG	••••	25 / 1" / 8"	2608642202	3165140602099
10"	254	30	2.70	2.00	120	HLTCG	••••	25 / 1" / 8"	2608642203	3165140602105
12"	305	30	2.70	2.00	100	HLTCG	••••	20 / 25 / 1"	2608642209	3165140602167
12"	305	30	2.70	2.00	120	HLTCG	••••	20 / 25 / 1"	2608642210	3165140602174
14"	355	30	3.00	2.40	100	HLTCG	••••	20 / 25 / 1"	2608642213	3165140602204
14"	355	30	3.00	2.40	120	HLTCG	••••	20 / 25 / 1"	2608642214	3165140602211

••• Fine cut in plastic, aluminum and non-ferrous metals  
Also well suited to cutting parquet, laminate, epoxy and occasional use in hardwood.

03.11PT/SAZ1. Printed in Malaysia. We reserve the right to change technical details without prior notice. No responsibility taken for printing errors.

50% longer blade life  
for lasting performance  
on aluminium.



**Robert Bosch Sdn Bhd** (220975-V)  
**Malaysia**  
No. 8A, Jalan 13/6, 46200 Petaling Jaya,  
Selangor, Malaysia.  
Tel: (603) 7966 3000 Fax: (603) 7958 3838  
www.bosch-pt.com.my

For further enquiries, please contact  
Malaysia  
**1 800 880 188**  
Mon-Fri 9am - 6pm

**Robert Bosch (SEA) Pte Ltd**  
**Singapore**  
11 Bishan Street 21,  
Singapore 573943  
Tel: (65) 6258 5511 Fax: (65) 6350 5315  
www.bosch-pt.com.sg

For further enquiries, please contact  
Singapore  
**1 800 333 8 333**  
Mon-Fri 8.30am - 5.30pm

**NEW! Circular Saw Blade**  
Lower cost and higher productivity  
for all your aluminum cutting.



**BOSCH**  
Invented for life

# Prolonged endurance **for 50% longer blade life.**



## Fine carbide teeth produced in-house

Carbide teeth are produced by Bosch in-house under strict quality control, to guarantee the quality of cut and the long lifetime of every blade.

High Cobalt content of carbide tips ensures a sharp cutting edge, toughness and a long lifetime on aluminum and other abrasive materials.

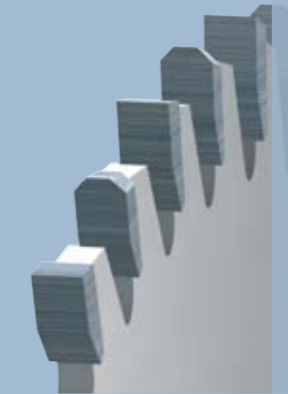
**Benefit: Clean cut, long life time**



## Face grinding

The face grinding brings sharp cutting edge and smooth cutting face.

**Benefit: Clean cuts, less chip clogging and long blade life**



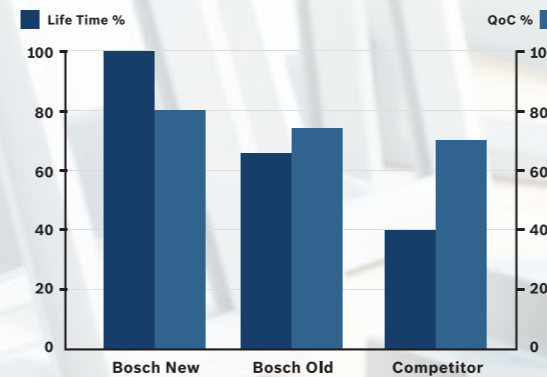
## Improved gullet design

Larger gullets improve chip flow, reducing the chance of chips clogging.

**Benefit: Less chip clogging**

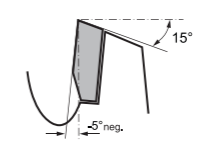


## Performance test in aluminium profiles\*

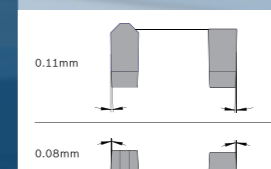


\* Internal test results according to Bosch procedure 261028296 / 2610928320

## Optimized teeth geometry design



Teeth are designed with front and side clearance angles that reduce material friction and chip clogging when cutting aluminum.



Hook angles are designed to deliver a combination of clean cutting edge and operational safety on aluminum and other abrasive materials.

**Benefit: Less chip clogging and clean cuts**

**Thin kerf** Benefit: Easy cuts and material saving



## Bosch quality Control **Q100**

100% of blades undergo inspection under a microscope to detect disabled teeth.

Regular performance tests to maintain high quality level.

**Benefit: Consistent product quality and product safety.**